



Dr's Cam V

280° twist head



Ez SHOT HD V



Extra Illumination Optic System

1 Features of V-series

- AF** **Auto focus**
Can get clear image with auto focus function in oral cavity.
- FHD** **FHD image**
Can get high definition image without distortion.
- Built-in mouse (Dr's cam only)**
Useable as a mouse.
- Adjustable LED brightness**
To avoid image quality loss by light reflection, can adjust LED brightness.
- Color impressions**
Adjust the color impression on camera to fit different monitors or screen.
- 280° twist head**
Easy to get approach anywhere in oral cavity.
- Black & White function**
Can take and send analog X-ray film image to PC.
- Plug & Play**
No need additional driver to install the device.
- Easy to capture**
Easy to image capture by camera only without extra device like foot pedal.
- Software compatibility**
Can be used camera with most of dental imaging software.
* It would need twain driver for some of dental imaging software.

2 Minimum System Requirement

PC system:	3.3GHz CPU, 4GB RAM
OS:	Windows 7
USB port:	USB 2.0





Fire

Fluorescence Base Intraoral Caries Detector with Endoscope

NEW ARRIVAL

280° twist head



Intraoral Camera mode IC mode

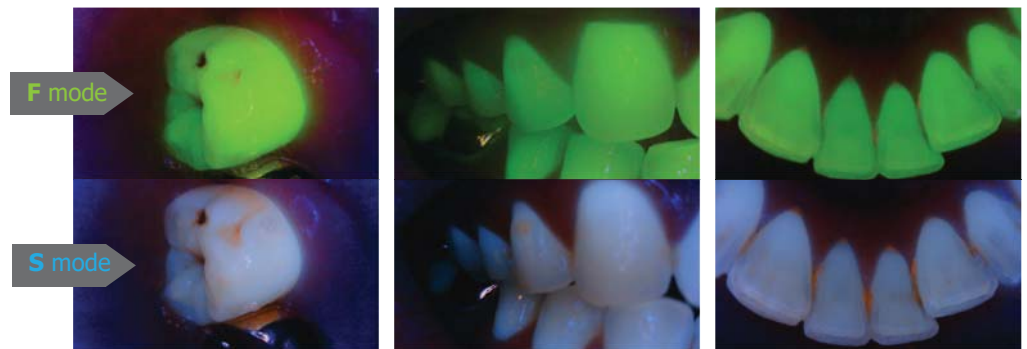
- AF** **Auto focus**
Can get clear image with auto focus function in oral cavity.
- FHD** **FHD image**
Can get high definition image without distortion.
- Built-in mouse**
Useable as a mouse.
- Adjustable LED brightness**
To avoid image quality loss by light reflection, can adjust LED brightness.
- Color impressions**
Adjust the color impression on camera to fit different monitors or screen.
- 280° twist head**
Easy to get approach anywhere in oral cavity.
- Black & White function**
Can take and send analog X-ray film image to PC.
- Plug & Play**
No need additional driver to install the device.
- Easy to capture**
Easy to image capture by camera only without extra device like foot pedal.
- Software compatibility**
Can be used camera with most of dental imaging software.
* It would need twain driver for some of dental imaging software.

EIOS
Extra Illumination Optic System



Fluorescence mode FL mode

1. FL mode is caries detection mode based fluorescence technology.
2. FL mode provides
 - Green fluorescence on sound enamel,
 - Red fluorescence on plaque, calculus, or caries,
 - Brown or Black color on early stage caries (white spot).
3. FL mode can be useful to detect early stage caries, tooth crack, secondary caries, plaque, calculus, and residual composite resin.
4. Dr's Cam VC supports 2 kinds of FL mode: F mode and S mode.



Dr'sViewer2 Image Viewer included.



www.gooddrs.com
E-mail. info@gooddrs.com



Good Doctors Co., Ltd.
#208, B-dong, 283 Bupyeong-daero, Bupyeong-gu (Woolim Lions Valley, Cheongchoen-dong), Incheon, 21315, Republic of Korea
Tel: +82 32 424 6325 Fax: +82 32 424 6326

Jan.2019 rev.0