

**e-MTA**

Mineral Trioxide Aggregate



**e-MTA Carrier**



## e-MTA

e-MTA ( Mineral trioxide aggregate) is a bioactive cement consisting of very fine hydrophilic particles of several mineral oxides.



Bio-Active

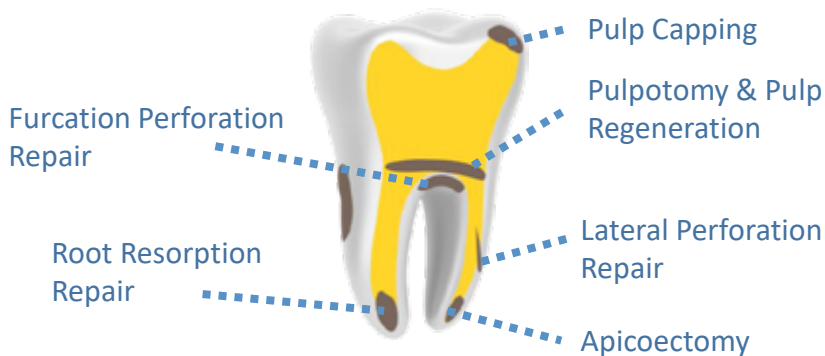
Washout Resistant

Quick Setting

Smart Packaging

Gel Based Technology

## Indications



### In Primary teeth:

- Pulp capping
- Pulpotomy
- Root canal filling
- Furcation perforation repair
- Resorption repair

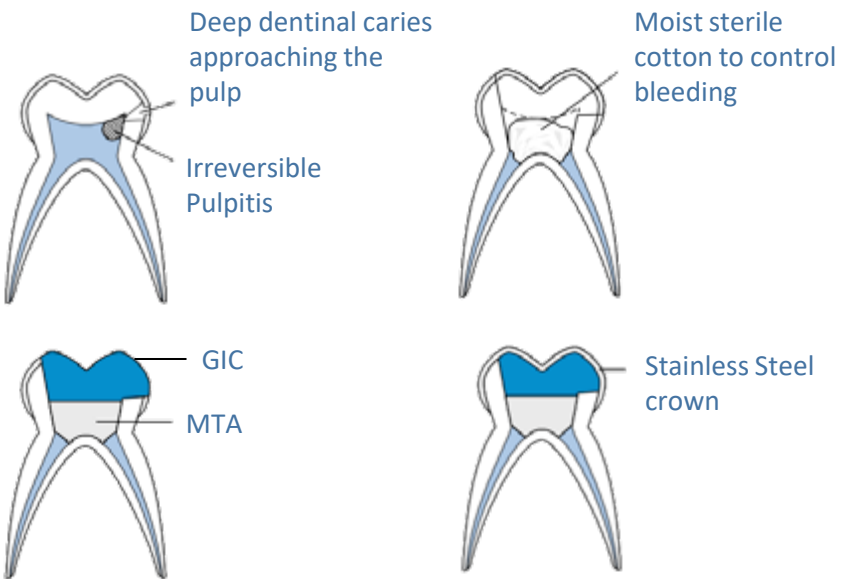
### In Permanent teeth:

- Pulp capping
- Partial pulpotomy
- Perforation repair
- Resorption repair
- Repair of fracture
- Root end filling
- Regenerative endodontics

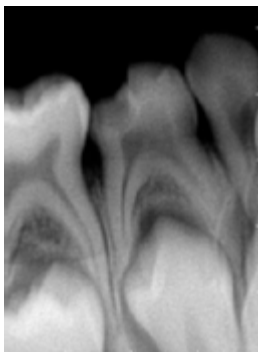
## Direction for use:

1. Open a tube of e-MTA material and dispense the powder onto a clean glass slab.
2. Take one drop of liquid/gel onto the glass slab next to powder
3. Incorporate the liquid into the cement gradually using the spatula. Powder to liquid/gel ratio is 3:1.
4. Mix the material with the liquid for about 30 seconds to ensure all the powder particles are hydrated and wet sand (Mixed with liquid) or putty type (mixed with gel) consistency is achieved.
5. Using a carrier to place the material where indicated.
6. Compact the mix lightly with a slightly moistened sterile cotton pellet.
7. Restore using glass ionomer or compomer material.

## Schematic representation of MTA Pulpotomy in Primary teeth



## Case of MTA Pulpotomy in Primary teeth



## Case of MTA Apexification in permanent teeth -by Dr.Mayur Bhattad



Pre operative



Working length estimation



MTA Condenser



Post operative



MTA in Apical Region

## Adverse Reaction

No contra-indications and side effects known

## Instruction for Storage

Store in original packaging in a dry place.  
Replace cap immediately after use.

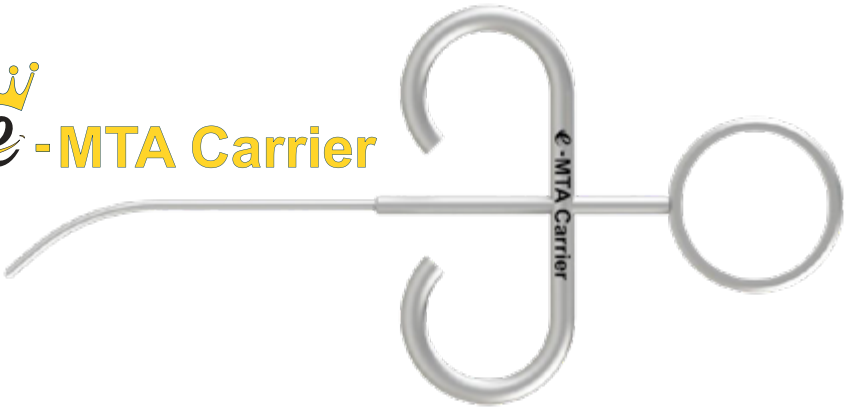


•PREVENT •PROTECT •REGENERATE

# Introducing



## e-MTA Carrier



Available in diameter of 0.8mm and 1.2mm

## Features

- e-MTA Carrier have been designed to dispense MTA at the designated site of operation, with ease of handling
- Made of Stainless Steel
- High Strength
- Autoclavable
- Curved design for easy access and better placement