

flaesh.com

# fläsh.

Whitening, just whiter.

**WHITE***smile*<sup>®</sup>  
**25**  
YEARS - QUALITY  
Made in Germany

ENGLISH





Whitening, just whiter.

## **A success factor for your clinic**

Latest studies show that more than 85% of the people would like to have whiter teeth. On the other hand not all patients ask directly about tooth whitening treatment when they are at their dentist.

### **That does not mean your patients are not interested in making the most out of their dental treatment!**

Patients wish to be informed about possibilities for perfect smiles. And if they are proud of their teeth they also share their experience with friends on a personal level and in social media.

Modern dentistry allows perfect nature like restorations. Orthodontic treatments with clear aligner systems give more adults a perfect smile with aligned teeth. Combine these treatments with a fläsh tooth whitening and your patients have an even better experience: a perfect smile!

Your clinic can demonstrate even more what it is:

**A center for perfect smiles.**

## Why is fläsh the best choice?

### **25 years of experience in whitening**

WHITEsmile, specialized tooth whitening, has been „Made in Germany“ since 1994 resulting in the excellent quality of fläsh.

### **Intuitive operation and safe application**

Guaranteed best results.

### **Consistent results**

Best tooth whitening - every time.

**WHITEsmile®**  
**25**  
YEARS - QUALITY  
Made in Germany



# fläsh.

## Whitening Lamp

### Intuitive operation – safe treatments

Latest high-performance LED technology with a high-intensity focused light spectrum with visible blue light. Life expectancy of the LEDs more than 10,000 applications. Ergonomic operation due to the Easy lock system – allows perfect positioning in front of the patient. Special settings for sensitive teeth and single tooth whitening. Light output can be varied. Optimal results with fläsh Chairside Light Whitening Gel. Safe working temperature.

#### System

- fläsh Whitening Lamp, high-performance-LED technology, light spectrum 465 nM, 190 mW/cm<sup>2</sup>, 100–240 V
- 3 safety goggles
- Time card system for fläsh whitening gel







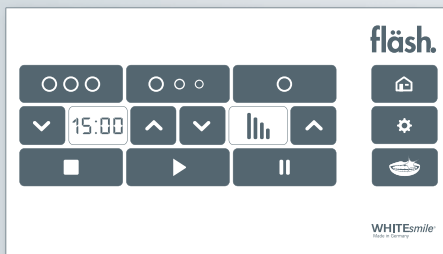
**Precise Positioning**  
Adjustable easy lock system

**Innovative fläshcard system**

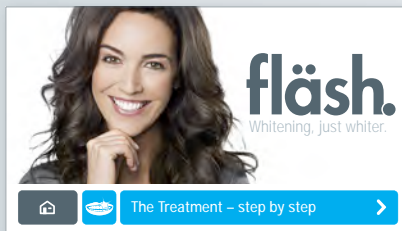
## Full color touch screen

### 3 whitening programs

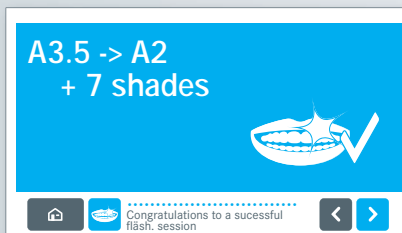
Constant, pulse & single tooth whitening



## Virtual instructions directly on the device

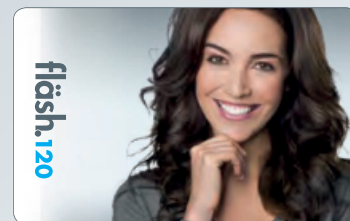


## Determination of whitening shades achieved.



## fläshcard

Time management system



## Video

The treatment – step by step  
[www.flaes.com](http://www.flaes.com)



# fläsh.

## Chairside Light Whitening System

### Developed with specialists – perfect results

fläsh Chairside Light Whitening with active chlorophyll is gentle to the teeth with a low sensitivity rate. Effective whitening in 3-4 x 15 minutes in one session. Cosmetic tooth whitening with 6% hydrogen peroxide. Medical tooth whitening with 32% hydrogen peroxide. For patients from 18 years of age. Medical tooth whitening with medical indication only.

Developed for the fläsh Whitening Lamp for whitest results.

The treatment can be intensified by subsequent use of fläsh Take Home Whitening.



Green gel for exact  
application



Easy exact positioning  
on the lip retractor



Flexible Lip Retractors for easy insertion  
in the patients mouth. **New: Available  
also in a small size.**

- Material per patient in 2 patient kit LIGHT WHITENING AC Gel in 4 g dual chamber syringe for 3–4 applications
- GINGIVA PROTECTOR light-curing in 1,5 g-syringes
- AFTER WHITENING MOUSSE for desensitizing and remineralizing
- Vitamin E oil as lip protection and HP irritations of soft tissue
- Time card with minute-accurate counting, 60 minutes per gel syringe, single tooth whitening without time counting
- fläsh Lip Retractors, autoclavable
- fläsh Whitening Toothpaste, 75ml, lime-mint
- Available concentrations:  
32% HP (Medical Tooth Whitening)  
6% HP (Cosmetic Tooth Whitening)



# fläsh.

## Take Home Whitening System

### With laboratory made customized trays

- **HOME WHITENING** Gel in 3 ml-syringes
- **AFTER WHITENING MOUSSE** for desensitizing and remineralizing
- **Bleaching foils**
- **Light-curing Blocker** for application on tooth modell
- **Concentrations:**
  - 10% CP (~ 3,5% HP)  
for application over night
  - 16% CP (~ 5,6% HP)  
for application over night  
or daytime use

CP = Carbamide Peroxide  
HP = Hydrogen Peroxide

For patients older than 18 years of age.





# fläsh.

## Whitening Toothpaste Care & Repair

### Intensive care for whiter teeth with 30% Xylitol and 15% Hydroxylapatite

fläsh Whitening Toothpaste is the ideal care for whiter teeth – before and after whitening treatments. Intended for daily use. Even for sensitive teeth. Strengthens the enamel with 15% hydroxylapatite. Double caries protection with sodium fluoride and high xylitol content. Non-abrasive.



- 1100 ppm sodium fluoride, 30% xylitol, 15% hydroxylapatite.
- No SLS. No triclosan. No bleaching agents.
- Taste: lime-mint, 75 ml.

## Whitening Pen Tooth Whitening to go

### Touch Up Tooth Whitening

- 4 ml, 16% CP (~ 5,6% HP)
- Taste: mint

For patients older than 18 years of age.





# fläsh.

## Tooth Whitening App

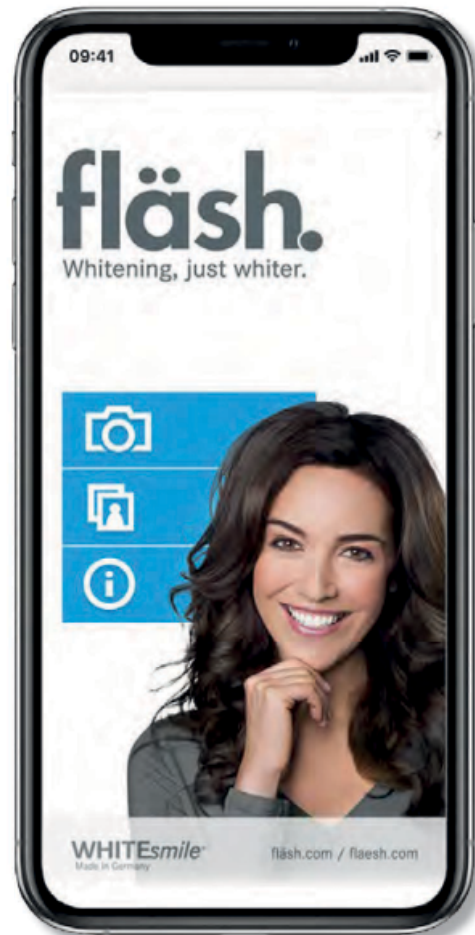
### Tooth whitening – digital

Experience the cosmetic success of tooth whitening with the new virtual fläsh Tooth Whitening App.

- Visualization of tooth whitening, using new or existing photos from the library on your smartphone
- Precise and simple detection of the teeth
- Adjustable brightness simulation with automatic detection of light conditions on your pictures
- Saving of photos
- Before/after comparison
- Share photos via email, Facebook or Twitter

Use the App to give your patients an impression of their brighter tooth color.

Get your fläsh App for Android and iPhone free of charge.





## Aesthetic Dentistry

### Best integration in your clinic

Tooth whitening today is an important part of aesthetic dentistry. In order to integrate it in your clinic there are a few points that can be helpful:

#### **Training your staff:**

The fläsh whitening lamp has a guided treatment function which leads easily through the procedure. There is also a step-by-step instruction video at [flaesh.com](http://flaesh.com). Start by whitening the teeth of your staff which creates ambassadors for whitening in your clinic.

#### **Create patients awareness for your whitening service:**

Most patients do not come primarily for a whitening treatment. The clinic team and dentist can easily offer patients the opportunity for a perfect white smile in conjunction with other dental treatments.

#### **Whitening makes your great work even more visible:**

Advertising natural-looking results of implants and great orthodontic work is most effective using before and after pictures. Combining the results of dental work with tooth whitening is even more effective and can be displayed on social media.





## Patient Information

### The way to a perfect smile

Tooth whitening treatments give your patients better smiles. They also give an additional value for dental treatments or can restore pathologically discolored teeth to their natural state. With the fläsh patient information leaflet you can easily explain the possibilities for a whiter smile to your individual patient.

Dental treatment and tooth whitening:  
a great combination!

Tooth whitening before dental restoration



To create a tooth-colored restoration, your dentist reconstructs your natural teeth, for example with fillings, inlays, crowns, or implants. The color of the dental restoration cannot be changed later. This is why the teeth should first be whitened and the restoration then produced to match. For a radiant smile and an attractive overall look.

Tooth whitening after orthodontic treatment



Orthodontic treatment for adults helps to ensure the proper function and alignment of your teeth. fläsh tooth whitening at the end of the treatment restores your youthful, bright tooth color in just 1 hour. The perfect conclusion to a successful treatment.

Single tooth whitening



Individual discolored teeth can impair the overall impact of your smile as well as your dental health. fläsh can also be used to whiten individual teeth.



before

after



# fläsh.Dermatology

## Hyaluron Intensive Gel

NEW

### Modern Anti-Aging Skin Care

Hyaluron Intensive Gel is an anti-aging product for smoother, firmer skin suitable for daily use or as an intensive treatment.

**The idea of a fläsh skin care product came from dentists.**

The anti-aging facial care can be applied during tooth whitening, resulting in a double effect for the patient: a radiant white smile, combined with revitalized, smoother skin.

**Real effects without side-effects,  
vegan and paraben-free**

Hyaluronic acid is an endogenous substance that is responsible for water balance in the connective tissue. Hyaluron has a long history of success in supporting the repair of damaged skin and slowing skin aging. The development of Hyaluron Intensive Gel was influenced by scientific studies showing that the combination of high- and low-molecular hyaluronic acids in a 2.5% gel concentration is significantly more effective than conventional hyaluron cosmetics in regard to moisture, resilience and wrinkle smoothing. Hyaluron Intensive Gel is certified according to the highest international standards.



30 ml, 2,5%  
Hyaluron

For daily use  
or intensive  
treatment.

# fläsh.

## Product Overview



### 3401 fläsh Whitening Lamp

1 x Whitening Lamp / 3 Safety Goggles / 1 Acrylic Advertising Plate, 60 x 60 cm

### 3102 fläsh Chairside Light Whitening System 32% HP

2-Patient Kit, 2 x Gel, 32% HP, 4 g / 2 x Gingiva Protector, 1,5 g  
2 x After Whitening Mousse, 1,2 ml / 4 x Cotton Roll, 9 cm  
2 x Lip Retractor / 2 x Vitamin E, 0,4 ml / 2 x fläsh Whitening  
Toothpaste, 75 ml / + 120 Minutes Time

32% HP: Medical Tooth Whitening only with Medical Indication



### 3107 fläsh Chairside Light Whitening System 6% HP

2-Patient Kit, 6% HP: Same Configuration as 3102 with 6% HP Gel

6% HP: Cosmetic Tooth Whitening

### 3201 fläsh Take Home Whitening System

1-Patient Kit, 4 x Gel, 10% CP, 3 ml

1 x After Whitening Mousse, 3 ml

2 x Foil / 1 x Blocker / 1 x Traybox [Cosmetic Tooth Whitening](#)



### 3202 fläsh Take Home Whitening System

1-Patient Kit, 4 x Gel, 16% CP, 3 ml

1 x After Whitening Mousse, 3 ml

2 x Foil / 1 x Blocker / 1 x Traybox [Cosmetic Tooth Whitening](#)

### 3310 fläsh Whitening Pen

4 ml, 16% Carbamide  
Peroxide, Taste: Mint

[Cosmetic Tooth Whitening](#)



### 3320 fläsh Whitening Toothpaste

75 ml, 30% Xylitol,  
15% Hydroxylapatite  
Taste: Lime-Mint



### 3350 fläsh Hyaluron Intensive Gel

30 ml, 2,5% Hyaluron

[Cosmetic Skin Care](#)



The Selection of Products may vary in different  
Countries. Please ask your Local Dealer.

fläsh.

Whitening, just whiter.