

PROFESSIONAL | PRECISELY | RELIABLE
ENDODONTIC SOLUTION



2018-2019

ENDODONTIC PRODUCTS CATALOGUE

WWW.FANTA-DENTAL.COM

AF™ WIRE

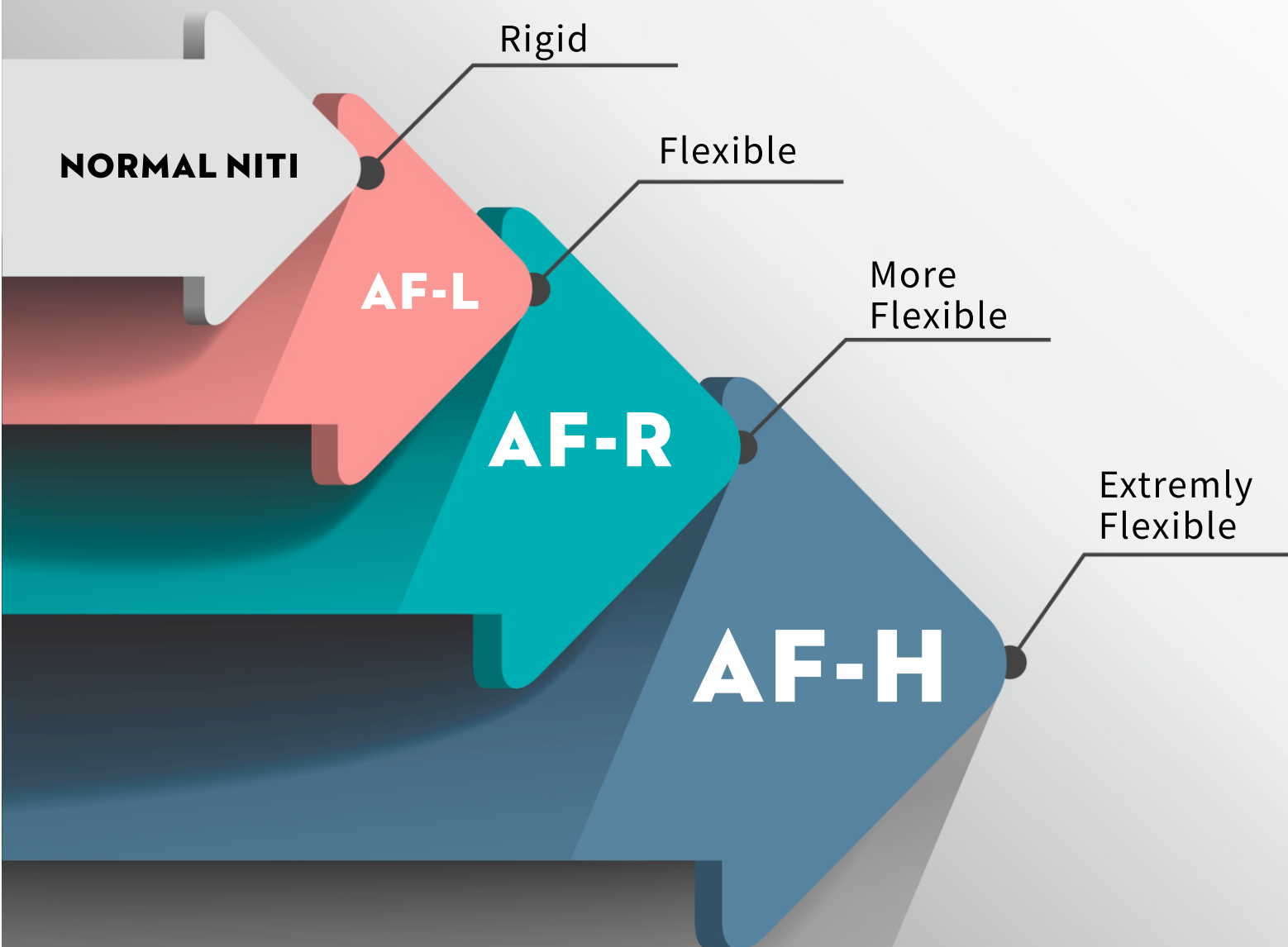
Fanta AF™ wire is a special heat-treated wire which be used for producing Endodontic rotary files.

As we know, stainless steel instruments are rigid and therefore unsuited for large apical enlargement in thin curved canals. NiTi alloys have superior properties in ductility, fatigue, recoverable strain, biocompatibility, and corrosion resistance.

AF™-Wire is a developed NiTi alloy, which ideally have excellent mechanical strength properties, and its flexibility is enough to avoid canal transportation, meanwhile its hardness is large enough to allow for good cutting efficacy.

Fanta AF™-Wire offers 3 levels of flexibility for choice, which depends on their crystallographic phases present in the alloy. They are: AF™-H, AF™-R, and AF™-L.

FROM AUSTENITE TO MARTENSITE:



AF™ F-EDM

- MUCH HIGHER FRACTURE RESISTANCE
- UNIQUELY HARDENED SURFACE
- FLAT DESIGN
- CONTROLLED MEMORY

A versatile file system design by Fanta Dental. The new AF™ F-EDM used the advanced EDM (electric discharge machining) technique, which can provide extremely flexible and fracture resistant. Meanwhile hardened surface plus flat design make the file cutting performance are extraordinary.



Triangle Cross Section Design _____

Flat design provide better debris remove and better cutting _____

EDM surface Lower risk of file separation _____

Non-cutting tip _____

ASSORTED	21MM	25MM	31MM	TAPER	SIZE	
F-EDM Open File	A12 1400 021 000	A12 1400 025 000	A12 1400 031 000	12	#17	●
F-EDM Path File				05	#18	●
F-EDM E1				04	#25	●
F-EDM E2				06	#25	●

(4pcs/box)

SINGLE SIZE	21MM	25MM	31MM	TAPER	SIZE	
F-EDM E1	A12 2404 021 025	A12 2404 025 025	A12 2404 031 025	04	#25	●
F-EDM E2	A12 2406 021 025	A12 2406 025 025	A12 2406 031 025	06	#25	●
F-EDM Path File	A12 2405 021 018	A12 2405 025 018	A12 2405 031 018	05	#18	●

(4pcs/box)

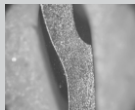
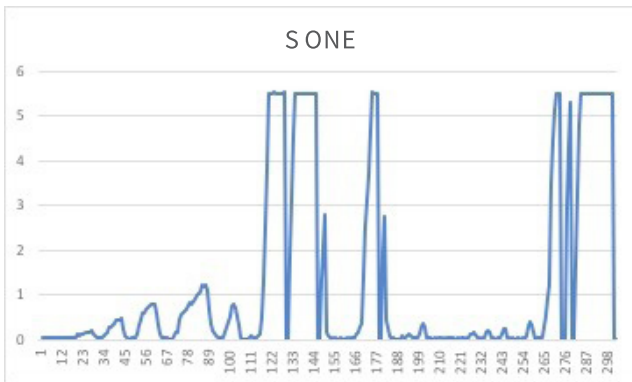
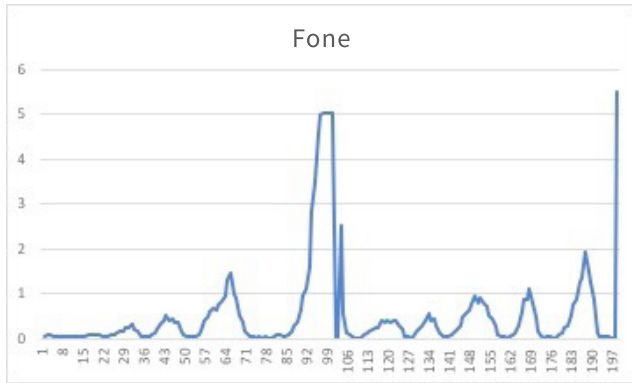
SINGLE SIZE	31MM	TAPER	SIZE	
F-EDM Open File	A12 2412 016 017	12	#17	●

(4pcs/box)



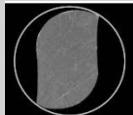
AF™ F-ONE

- FLAT DESIGN, ONE FILE SYSTEM
- RETREATMENT OF GUTTA PERCHA FILLING
- MORE EFFICIENT CUTTING
- HIGHER RESISTANCE TO CYCLIC FATIGUE
- SOLUTION FOR CURVED CANALS



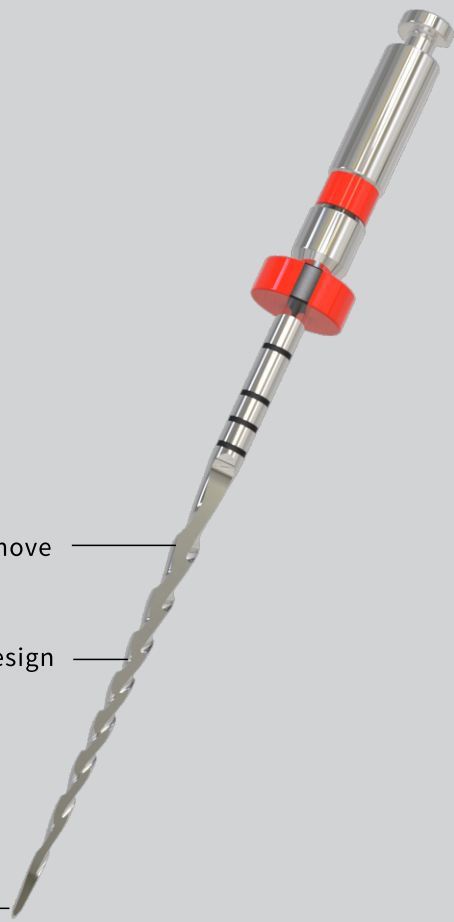
Flat Design

Provide better cutting, and debris remove



2 Active cutting point cross section design

Non-cutting Tip



F one has more than 150% higher resistance to cyclic fatigue than S one

SINGLE SIZE	21MM	25MM	31MM	TAPER	SIZE	
F-ONE F1	A20 2304 021 020	A20 2304 025 020	A20 2304 031 020	04	#20	●
F-ONE F2	A20 2304 021 025	A20 2304 025 025	A20 2304 031 025	04	#25	●
F-ONE F3	A20 2304 021 035	A20 2304 025 035	A20 2304 031 035	04	#35	●
F-ONE F4	A20 2306 021 020	A20 2306 025 020	A20 2306 031 020	06	#20	●
F-ONE F5	A20 2306 021 025	A20 2306 025 025	A20 2306 031 025	06	#25	●
F-ONE F6	A20 2306 021 035	A20 2306 025 035	A20 2306 031 035	06	#35	●

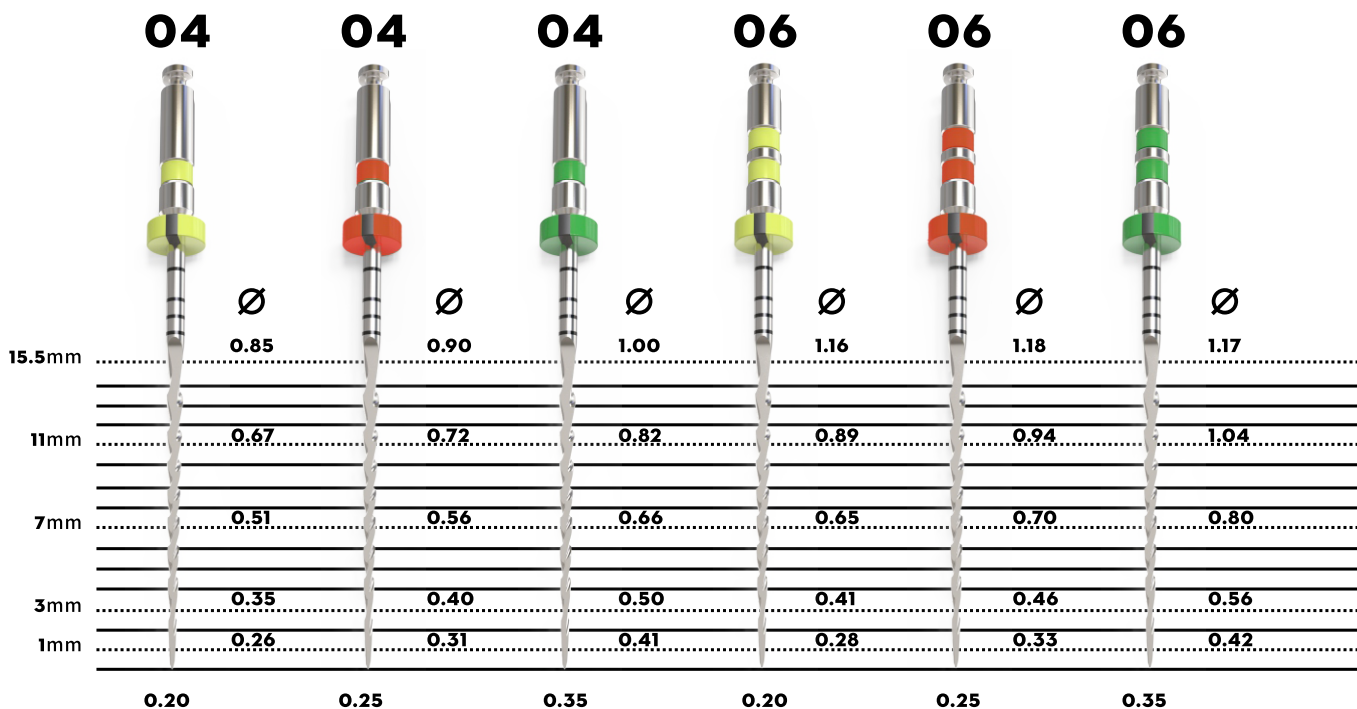
(3pcs/box)

SINGLE SIZE	19MM	TAPER	SIZE	
F-ONE Open File	A20 2412 019 017	12	#17	●

(4pcs/box)

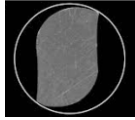
ASSORTED	21MM	25MM	31MM	TAPER	SIZE
Open File + F1*3	A20 1404 021 020	A20 1404 025 020	A20 1404 031 020	04	#20
Open File + F2*3	A20 1404 021 025	A20 1404 025 025	A20 1404 031 025	04	#25
Open File + F3*3	A20 1404 021 035	A20 1404 025 035	A20 1404 031 035	04	#35
Open File + F4*3	A20 1406 021 020	A20 1406 025 020	A20 1406 031 020	06	#20
Open File + F5*3	A20 1406 021 025	A20 1406 025 025	A20 1406 031 025	06	#25
Open File + F6*3	A20 1406 021 035	A20 1406 025 035	A20 1406 031 035	06	#35

(4pcs/box)



AF™ BLUE S ONE

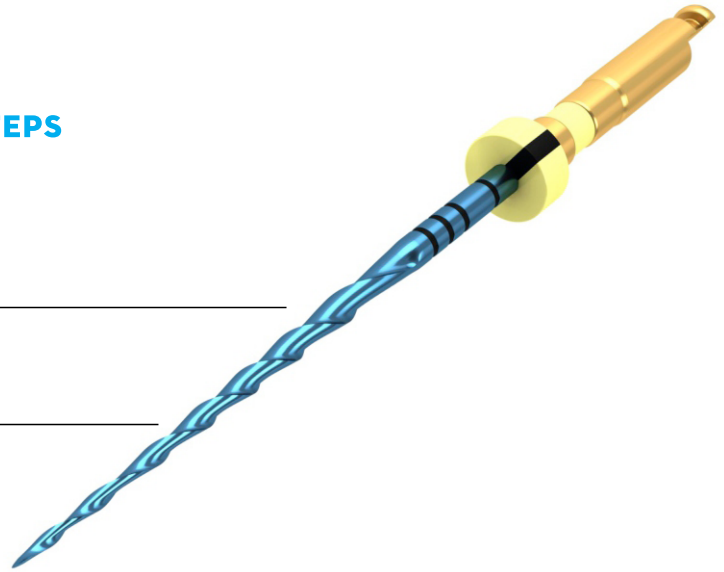
- HIGH EFFICIENT CROSS SECTION DESIGN
- BLUE AF™ - H WIRE TECH
- ONE FILE SYSTEM, SIMPLE OPERATION STEPS



S cross section design

AF™-H Wire Tech

Non-cutting Tip



SINGLE SIZE	21MM	25MM	31MM	TAPER	SIZE	
S-ONE S1	A19 2304 021 020	A19 2304 025 020	A19 2304 031 020	04	#20	●
S-ONE S2	A19 2304 021 025	A19 2304 025 025	A19 2304 031 025	04	#25	●
S-ONE S3	A19 2304 021 035	A19 2304 025 035	A19 2304 031 035	04	#35	●
S-ONE S4	A19 2306 021 020	A19 2306 025 020	A19 2306 031 020	06	#20	●
S-ONE S5	A19 2306 021 025	A19 2306 025 025	A19 2306 031 025	06	#25	●
S-ONE S6	A19 2306 021 035	A19 2306 025 035	A19 2306 031 035	06	#35	●

(3pcs/box)

SINGLE SIZE	19MM	TAPER	SIZE	
S-ONE Open File	A19 2412 019 017	12	#17	●

(4pcs/box)

ASSORTED	21MM	25MM	31MM	TAPER	SIZE
Open File + S1*3	A19 1404 021 020	A19 1404 025 020	A19 1404 031 020	04	#20
Open File + S2*3	A19 1404 021 025	A19 1404 025 025	A19 1404 031 025	04	#25
Open File + S3*3	A19 1404 021 035	A19 1404 025 035	A19 1404 031 035	04	#35
Open File + S4*3	A19 1406 021 020	A19 1406 025 020	A19 1406 031 020	06	#20
Open File + S5*3	A19 1406 021 025	A19 1406 025 025	A19 1406 031 025	06	#25
Open File + S6*3	A19 1406 021 035	A19 1406 025 035	A19 1406 031 035	06	#35

(4pcs/box)

AF™ BLUE R3

- RECIPROCATING
- BLUE AF™ - H WIRE TECH
- ONE FILE SYSTEM



SINGLE SIZE	21MM	25MM	31MM	TAPER	SIZE	
R3 - R1	A05 2306 021 020	A05 2306 025 020	A05 2306 031 020	06	#20	●
R3 - R2	A05 2306 021 025	A05 2306 025 025	A05 2306 031 025	06	#25	●
R3 - R3	A05 2306 021 040	A05 2306 025 040	A05 2306 031 040	06	#40	●

(3pcs/box)



C-PATH ROTARY

- AF™ - L WIRE TECH
- RESPECT TO THE CANAL ANATOMY
- GLIDE PATH MANAGEMENT

SINGLE SIZE	21MM	25MM	31MM	TAPER	SIZE	
C-Path 13/02	F21 2602 021 013	F21 2602 025 013	F21 2602 031 013	02	#13	●
C-Path 16/02	F21 2602 021 016	F21 2602 025 016	F21 2602 031 016	02	#16	○
C-Path 19/02	F21 2602 021 019	F21 2602 025 019	F21 2602 031 019	02	#19	●

(6pcs/box)

ASSORTED	21MM	25MM	31MM
Open File + 13/02 + 16/02 + 19/02	F21 1402 021 000	F21 1402 025 000	F21 1402 031 000

(4pcs/box)

AF™ BLUE ROTARY

- AF™ - H WIRE TECH
- TRIANGLE CROSS SECTION
- RESPECT TO THE CANAL ANATOMY
- WIDE RANGE OF SIZES FOR CHOICE
- S4 IS A SPECIAL SEQUENCE SUITABLE FOR MOST OF THE CASES



SINGLE SIZE	21MM	25MM	31MM	TAPER	SIZE	
15/04	A04 2604 021 015	A04 2604 025 015	A04 2604 031 015	04	#15	●
20/04	A04 2604 021 020	A04 2604 025 020	A04 2604 031 020	04	#20	●
25/04	A04 2604 021 025	A04 2604 025 025	A04 2604 031 025	04	#25	●
30/04	A04 2604 021 030	A04 2604 025 030	A04 2604 031 030	04	#30	●
35/04	A04 2604 021 035	A04 2604 025 035	A04 2604 031 035	04	#35	●
40/04	A04 2604 021 040	A04 2604 025 040	A04 2604 031 040	04	#40	●
15/06	A04 2606 021 015	A04 2606 025 015	A04 2606 031 015	06	#15	●
20/06	A04 2606 021 020	A04 2606 025 020	A04 2606 031 020	06	#20	●
25/06	A04 2606 021 025	A04 2606 025 025	A04 2606 031 025	06	#25	●
30/06	A04 2606 021 030	A04 2606 025 030	A04 2606 031 030	06	#30	●
35/06	A04 2606 021 035	A04 2606 025 035	A04 2606 031 035	06	#35	●
40/06	A04 2606 021 040	A04 2606 025 040	A04 2606 031 040	06	#40	●

(6pcs/box)

AF™ BLUE OPEN FILE

SINGLE SIZE	16MM	TAPER	SIZE	
17/12	A04 2612 016 017	12	#17	●

(6pcs/box)

AF™ BLUE C-PATH FILE

SINGLE SIZE	21MM	25MM	31MM	TAPER	SIZE	
18/05	A04 2605 021 018	A04 2605 025 018	A04 2605 031 018	05	#18	●

(6pcs/box)

AF™ BLUE S4 KIT

ASSORTED	21MM	25MM	31MM
Open File + Path File + 25/06 + 35/04	A04 1400 021 000	A04 1400 025 000	A04 1400 031 000

(4pcs/box)



V-TAPER™ BLUE ROTARY

- AF™ - H WIRE TECH
- TRIANGLE CROSS SECTION
- RESPECT TO THE CANAL ANATOMY
- POPULAR VARIABLE TAPER DESIGN
- ENSURE BETTER APICAL IRRIGATION AND OBTURATION

SINGLE SIZE	21MM	25MM	31MM	TAPER	SIZE	
V-Taper VTB1	V08 2606 021 015	V08 2606 025 015	V08 2606 031 015	06 vt	#15	○
V-Taper VTB2	V08 2606 021 020	V08 2606 025 020	V08 2606 031 020	07 vt	#20	●
V-Taper VTB3	V08 2606 021 025	V08 2606 025 025	V08 2606 031 025	08 vt	#25	●

(6pcs/box)

ASSORTED	21MM	25MM	31MM
Open File + Path File 19/02 + VTB1 + VTB2 + VTB3	V08 1500 021 000	V08 1500 025 000	V08 1500 031 000

(5pcs/box)

AF™ BLUE OPEN FILE

SINGLE SIZE	16MM	TAPER	SIZE	
17/12	A04 2612 016 017	12	#17	●

(6pcs/box)

AF™ BLUE C-PATH FILE

SINGLE SIZE	21MM	25MM	31MM	TAPER	SIZE	
C-Path Blue 13/02	F10 2602 021 013	F10 2602 025 013	F10 2602 031 013	02	#13	●
C-Path Blue 16/02	F10 2602 021 016	F10 2602 025 016	F10 2602 031 016	02	#16	○
C-Path Blue 19/02	F10 2602 021 019	F10 2602 025 019	F10 2602 031 019	02	#19	●

(6pcs/box)

V-TAPER™ ROTARY

- VARIABLE TAPER 6 FILES DESIGN
- 3 SHAPING FILES, 3 FINISHING FILES
- AF-L WIRE TECH



SINGLE SIZE	21MM	25MM	31MM	TAPER	SIZE	
SX		V01 2604 016 019		04 vt	#19	●
S1	V01 2602 021 018	V01 2602 025 018	V01 2602 031 018	02 vt	#18	●
S2	V01 2604 021 020	V01 2604 025 020	V01 2604 031 020	04 vt	#20	●
F1	V01 2607 021 020	V01 2607 025 020	V01 2607 031 020	07 vt	#20	●
F2	V01 2608 021 025	V01 2608 025 025	V01 2608 031 025	08 vt	#25	●
F3	V01 2609 021 030	V01 2609 025 030	V01 2609 031 030	09 vt	#30	●

(6pcs/box)

ASSORTED	21MM	25MM	31MM
SX+S1+S2+F1+F2+F3	V01 1600 021 000	V01 1600 025 000	V01 1600 031 000

(6pcs/box)

V-TAPER™ HAND FILE



SINGLE SIZE	21MM	25MM	31MM	TAPER	SIZE	
SX		H01 2604 016 019		04 vt	#19	●
S1	H01 2602 021 018	H01 2602 025 018	H01 2602 031 018	02 vt	#18	●
S2	H01 2604 021 020	H01 2604 025 020	H01 2604 031 020	04 vt	#20	●
F1	H01 2607 021 020	H01 2607 025 020	H01 2607 031 020	07 vt	#20	●
F2	H01 2608 021 025	H01 2608 025 025	H01 2608 031 025	08 vt	#25	●
F3	H01 2609 021 030	H01 2609 025 030	H01 2609 031 030	09 vt	#30	●

(6pcs/box)

ASSORTED	21MM	25MM	31MM
SX+S1+S2+F1+F2+F3	H01 1600 021 000	H01 1600 025 000	H01 1600 031 000

(6pcs/box)

V-TAPER™ GOLD ROTARY

- VARIABLE TAPER 6 FILES DESIGN
- 3 SHAPING FILES, 3 FINISHING FILES
- AF-R WIRE TECH FOR SHAPING FILES, AF-H WIRE TECH FOR FINISHING FILES



SINGLE SIZE	21MM	25MM	31MM	TAPER	SIZE	
SX		V02 2604 016 019		04 vt	#19	●
S1	V02 2602 021 018	V02 2602 025 018	V02 2602 031 018	02 vt	#18	●
S2	V02 2604 021 020	V02 2604 025 020	V02 2604 031 020	04 vt	#20	●
F1	V02 2607 021 020	V02 2607 025 020	V02 2607 031 020	07 vt	#20	●
F2	V02 2608 021 025	V02 2608 025 025	V02 2608 031 025	08 vt	#25	●
F3	V02 2609 021 030	V02 2609 025 030	V02 2609 031 030	09 vt	#30	●

(6pcs/box)

ASSORTED	21MM	25MM	31MM
SX+S1+S2+F1+F2+F3	V02 1600 021 000	V02 1600 025 000	V02 1600 031 000

(6pcs/box)



AF™ ROTARY

- AF™ - H WIRE TECH
- TRIANGLE CROSS SECTION
- RESPECT TO THE CANAL ANATOMY
- 04, 06 TAPER DESIGN
- SUITABLE FOR CURVED CANALS

SINGLE SIZE	21MM	25MM	31MM	TAPER	SIZE	
20/04	A03 2604 021 020	A03 2604 025 020	A03 2604 031 020	04	#20	●
25/04	A03 2604 021 025	A03 2604 025 025	A03 2604 031 025	04	#25	●
35/04	A03 2604 021 030	A03 2604 025 030	A03 2604 031 030	04	#30	●

(6pcs/box)

ASSORTED	21MM	25MM	31MM
Open File + C-Path 19/02 + 20/04 + 25/04 + 30/04	A04 1400 021 000	A04 1400 025 000	A04 1400 031 000

(5pcs/box)

AF™ OPEN FILE

SINGLE SIZE	16MM	TAPER	SIZE	
Open File	A03 2612 016 017	12	#17	●

(6pcs/box)

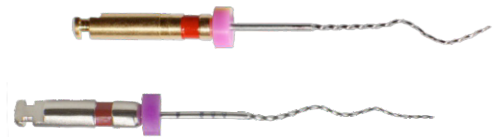
AF™ C-PATH FILE

SINGLE SIZE	21MM	25MM	31MM	TAPER	SIZE	
C-Path 13/02	F21 2602 021 013	F21 2602 025 013	F21 2602 031 013	02	#13	●
C-Path 16/02	F21 2602 021 016	F21 2602 025 016	F21 2602 031 016	02	#16	○
C-Path 19/02	F21 2602 021 019	F21 2602 025 019	F21 2602 031 019	02	#19	●

(6pcs/box)

AF™ MAX

- CANAL SHAPING AND CLEANING
- MAXIMUM TO 04 TAPER
- #25 TIP SIZE



SINGLE SIZE	21MM	25MM	31MM	TAPER	SIZE	
MAX 1	F11 2101 021 025	F11 2101 025 025	F11 2101 031 025	01-04	#25	●
MAX 2	F11 2102 021 025	F11 2102 025 025	F11 2102 031 025	01-04	#25	●
MAX 3	F11 2103 021 025	F11 2103 025 025	F11 2103 031 025	01-04	#25	●

(1pc/tube)

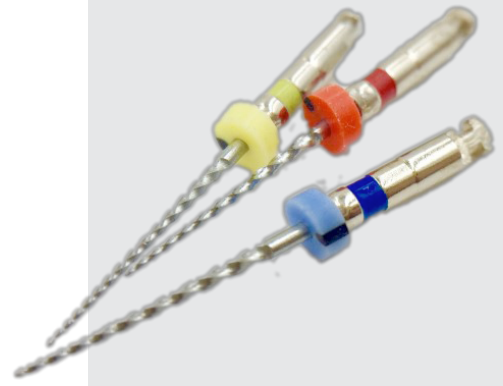
AF™ MAX BLUE

SINGLE SIZE	21MM	25MM	31MM	TAPER	SIZE	
MAX 1	F22 2101 021 025	F22 2101 025 025	F22 2101 031 025	01-04	#25	●
MAX 2	F22 2102 021 025	F22 2102 025 025	F22 2102 031 025	01-04	#25	●
MAX 3	F22 2103 021 025	F22 2103 025 025	F22 2103 031 025	01-04	#25	●

(1pc/tube)

AF™ BABY ROTARY

- AF™ - H WIRE TECH
- TRIANGLE CROSS SECTION
- SPECIALLY DESIGN FOR CHILDREN
- 04, 06 TAPER, 16MM LENGTH DESIGN



SINGLE SIZE	16MM	TAPER	SIZE	
20/04	A06 2604 016 020	04	#20	●
25/04	A06 2604 016 025	04	#25	●
30/04	A06 2604 016 030	04	#30	●
20/06	A06 2606 016 020	06	#20	●
25/06	A06 2606 016 025	06	#25	●
30/06	A06 2606 016 030	06	#30	●

(6pcs/box)

ASSORTED	16MM
Open File + 20/04 + 25/04 + 30/04	A06 1404 016 000
Open File + 20/04 + 25/06 + 30/04	A06 1406 016 000

(4pcs/box)

SINGLE SIZE	16MM	TAPER	SIZE	
Open File	A06 2608 010 017	08	#17	●

(6pcs/box)

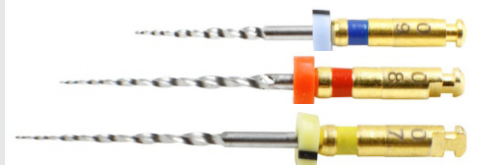
AF™ RETREATMENT ROTARY

SINGLE SIZE	PN	TAPER	SIZE	
Retreatment File 1	F09 2607 025 020	07	#20	●
Retreatment File 2	F09 2608 021 025	08	#25	●
Retreatment File 3	F09 2609 019 030	09	#30	●

(6pcs/box)





ASSORTED	31MM
20/07+25/08+30/09	F09 1300 000 000

(3pcs/box)



AF™ CL SYSTEM ^{1st} SPRCIAL FILE FOR CORRECTING LEDGED CANAL

AF™ CL ROTARY FILE







SINGLE SIZE	21MM	25MM	31MM	TAPER	SIZE	
10/06	F07 2606 021 010	F07 2606 025 010	F07 2606 031 010	06	#10	
15/06	F07 2606 021 015	F07 2606 025 015	F07 2606 031 015	06	#15	
10/08	F07 2608 021 010	F07 2608 025 010	F07 2608 031 010	08 vt	#10	
20/07	F07 2607 021 020	F07 2607 025 020	F07 2607 031 020	07 vt	#20	
25/08	F07 2608 021 025	F07 2608 025 025	F07 2608 031 025	08 vt	#25	
30/09	F07 2609 021 030	F07 2609 025 030	F07 2609 031 030	09 vt	#30	

(6pcs/box)

ASSORTED	21MM	25MM	31MM
10/06+15/06+10/08+20/07+25/08+30/09	F07 1600 021 000	F07 1600 025 000	F07 1600 031 000

(6pcs/box)

AF™ CL HAND FILE

SINGLE SIZE	21MM	25MM	31MM	TAPER	SIZE	
10/06	H07 2606 021 010	H07 2606 025 010	H07 2606 031 010	06	#10	
15/06	H07 2606 021 015	H07 2606 025 015	H07 2606 031 015	06	#15	
10/08	H07 2608 021 010	H07 2608 025 010	H07 2608 031 010	08 vt	#10	
20/07	H07 2607 021 020	H07 2607 025 020	H07 2607 031 020	07 vt	#20	
25/08	H07 2608 021 025	H07 2608 025 025	H07 2608 031 025	08 vt	#25	
30/09	H07 2609 021 030	H07 2609 025 030	H07 2609 031 030	09 vt	#30	

(6pcs/box)

ASSORTED	21MM	25MM	31MM
10/06+15/06+10/08+20/07+25/08+30/09	H07 1600 021 000	H07 1600 025 000	H07 1600 031 000

(6pcs/box)

Pre-bend Tip design _____

Triangle cross section Design _____

AF™-H Wire Tech _____



K-EDM HAND FILE SYSTEM

- UNIQUELY HARDENED SURFACE
- MUCH BETTER FLEXIBILITY
- EXCELLENT CUTTING



SIZE	21MM	25MM	31MM	
#6	H18 2602 021 006	H18 2602 025 006	H18 2602 031 006	●
#8	H18 2602 021 008	H18 2602 025 008	H18 2602 031 008	●
#10	H18 2602 021 010	H18 2602 025 010	H18 2602 031 010	●
#6 - #10	H18 1602 021 001	H18 1602 025 001	H18 1602 031 001	
#15	H18 2602 021 015	H18 2602 025 015	H18 2602 031 015	○
#20	H18 2602 021 020	H18 2602 025 020	H18 2602 031 020	●
#25	H18 2602 021 025	H18 2602 025 025	H18 2602 031 025	●
#30	H18 2602 021 030	H18 2602 025 030	H18 2602 031 030	●
#35	H18 2602 021 035	H18 2602 025 035	H18 2602 031 035	●
#40	H18 2602 021 040	H18 2602 025 040	H18 2602 031 040	●
#15 - #40	H18 1602 021 002	H18 1602 025 002	H18 1602 031 002	
#45	H18 2602 021 045	H18 2602 025 045	H18 2602 031 045	○
#50	H18 2602 021 050	H18 2602 025 050	H18 2602 031 050	●
#55	H18 2602 021 055	H18 2602 025 055	H18 2602 031 055	●
#60	H18 2602 021 060	H18 2602 025 060	H18 2602 031 060	●
#70	H18 2602 021 070	H18 2602 025 070	H18 2602 031 070	●
#80	H18 2602 021 080	H18 2602 025 080	H18 2602 031 080	●
#45 - #80	H18 1602 021 003	H18 1602 025 003	H18 1602 031 003	
#90	H18 2602 021 090	H18 2602 025 090	H18 2602 031 090	○
#100	H18 2602 021 100	H18 2602 025 100	H18 2602 031 100	●
#110	H18 2602 021 110	H18 2602 025 110	H18 2602 031 110	●
#120	H18 2602 021 120	H18 2602 025 120	H18 2602 031 120	●
#130	H18 2602 021 130	H18 2602 025 130	H18 2602 031 130	●
#140	H18 2602 021 140	H18 2602 025 140	H18 2602 031 140	●
#90 - #140	H18 1602 021 004	H18 1602 025 004	H18 1602 031 004	

(6pcs/box)

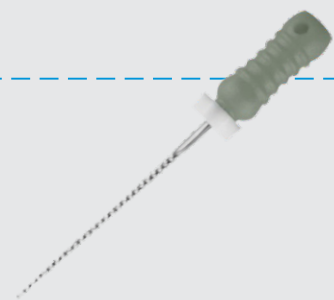
STAINLESS STEEL K FILE

SIZE	21MM	25MM	31MM	
#6	H14 2602 021 006	H14 2602 025 006	H14 2602 031 006	●
#8	H14 2602 021 008	H14 2602 025 008	H14 2602 031 008	●
#10	H14 2602 021 010	H14 2602 025 010	H14 2602 031 010	●
#6 - #10	H14 1602 021 001	H14 1602 025 001	H14 1602 031 001	
#15	H14 2602 021 015	H14 2602 025 015	H14 2602 031 015	○
#20	H14 2602 021 020	H14 2602 025 020	H14 2602 031 020	●
#25	H14 2602 021 025	H14 2602 025 025	H14 2602 031 025	●
#30	H14 2602 021 030	H14 2602 025 030	H14 2602 031 030	●
#35	H14 2602 021 035	H14 2602 025 035	H14 2602 031 035	●
#40	H14 2602 021 040	H14 2602 025 040	H14 2602 031 040	●
#15 - #40	H14 1602 021 002	H14 1602 025 002	H14 1602 031 002	
#45	H14 2602 021 045	H14 2602 025 045	H14 2602 031 045	○
#50	H14 2602 021 050	H14 2602 025 050	H14 2602 031 050	●
#55	H14 2602 021 055	H14 2602 025 055	H14 2602 031 055	●
#60	H14 2602 021 060	H14 2602 025 060	H14 2602 031 060	●
#70	H14 2602 021 070	H14 2602 025 070	H14 2602 031 070	●
#80	H14 2602 021 080	H14 2602 025 080	H14 2602 031 080	●
#45 - #80	H14 1602 021 003	H14 1602 025 003	H14 1602 031 003	
#90	H14 2602 021 090	H14 2602 025 090	H14 2602 031 090	○
#100	H14 2602 021 100	H14 2602 025 100	H14 2602 031 100	●
#110	H14 2602 021 110	H14 2602 025 110	H14 2602 031 110	●
#120	H14 2602 021 120	H14 2602 025 120	H14 2602 031 120	●
#130	H14 2602 021 130	H14 2602 025 130	H14 2602 031 130	●
#140	H14 2602 021 140	H14 2602 025 140	H14 2602 031 140	●
#90 - #140	H14 1602 021 004	H14 1602 025 004	H14 1602 031 004	

(6pcs/box)

C-FLEX FILE

- FOR SEVERELY CURVED OR CALCIFIED CANALS
- EXCELLENT CUTTING

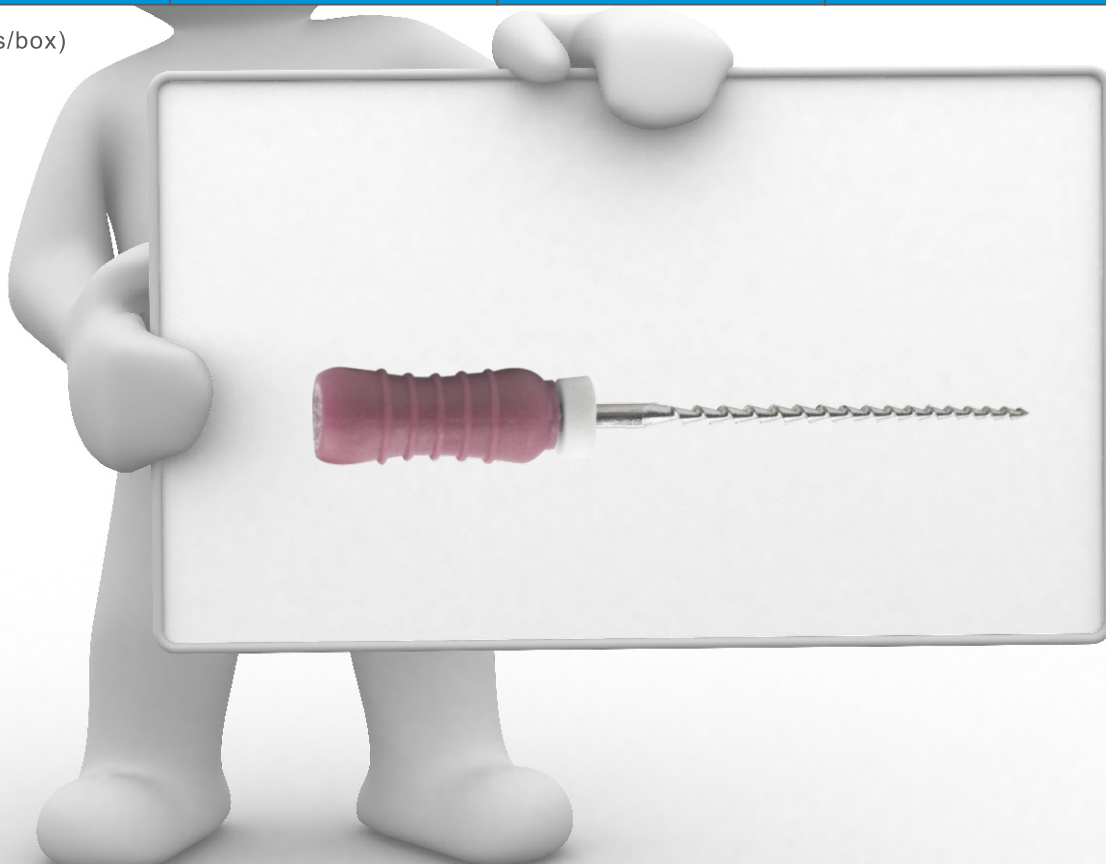


SIZE	21MM	25MM	31MM	
#6	H17 2602 021 006	H17 2602 025 006	H17 2602 031 006	●
#8	H17 2602 021 008	H17 2602 025 008	H17 2602 031 008	●
#10	H17 2602 021 010	H17 2602 025 010	H17 2602 031 010	●
#13	H17 2602 021 013	H17 2602 025 013	H17 2602 031 013	●
#16	H17 2602 021 016	H17 2602 025 016	H17 2602 031 016	○

STAINLESS STEEL HEDSTROEM FILE

SIZE	21MM	25MM	31MM	
#6	H15 2602 021 006	H15 2602 025 006	H15 2602 031 006	●
#8	H15 2602 021 008	H15 2602 025 008	H15 2602 031 008	●
#10	H15 2602 021 010	H15 2602 025 010	H15 2602 031 010	●
#6 - #10	H15 1602 021 001	H15 1602 025 001	H15 1602 031 001	
#15	H15 2602 021 015	H15 2602 025 015	H15 2602 031 015	○
#20	H15 2602 021 020	H15 2602 025 020	H15 2602 031 020	●
#25	H15 2602 021 025	H15 2602 025 025	H15 2602 031 025	●
#30	H15 2602 021 030	H15 2602 025 030	H15 2602 031 030	●
#35	H15 2602 021 035	H15 2602 025 035	H15 2602 031 035	●
#40	H15 2602 021 040	H15 2602 025 040	H15 2602 031 040	●
#15 - #40	H15 1602 021 002	H15 1602 025 002	H15 1602 031 002	
#45	H15 2602 021 045	H15 2602 025 045	H15 2602 031 045	○
#50	H15 2602 021 050	H15 2602 025 050	H15 2602 031 050	●
#55	H15 2602 021 055	H15 2602 025 055	H15 2602 031 055	●
#60	H15 2602 021 060	H15 2602 025 060	H15 2602 031 060	●
#70	H15 2602 021 070	H15 2602 025 070	H15 2602 031 070	●
#80	H15 2602 021 080	H15 2602 025 080	H15 2602 031 080	●
#45 - #80	H15 1602 021 003	H15 1602 025 003	H15 1602 031 003	
#90	H15 2602 021 090	H15 2602 025 090	H15 2602 031 090	○
#100	H15 2602 021 100	H15 2602 025 100	H15 2602 031 100	●
#110	H15 2602 021 110	H15 2602 025 110	H15 2602 031 110	●
#120	H15 2602 021 120	H15 2602 025 120	H15 2602 031 120	●
#130	H15 2602 021 130	H15 2602 025 130	H15 2602 031 130	●
#140	H15 2602 021 140	H15 2602 025 140	H15 2602 031 140	●
#90 - #140	H15 1602 021 004	H15 1602 025 004	H15 1602 031 004	

(6pcs/box)



GATES GLIDDEN

	28MM	32MM	38MM
#1	GTG2801	GTG3201	GTG3801
#2	GTG2802	GTG3203	GTG3802
#3	GTG2803	GTG3204	GTG3803
#4	GTG2804	GTG3204	GTG3804
#5	GTG2805	GTG3205	GTG3805
#6	GTG2806	GTG3206	GTG3806
Assorted	GTG28A	GTG32A	GTG38A1

(4pcs/box)



PEESO REAMER

	28MM	32MM	38MM
#1	PSR2801	PSR3201	PSR3801
#2	PSR2802	PSR3203	PSR3802
#3	PSR2803	PSR3204	PSR3803
#4	PSR2804	PSR3204	PSR3804
#5	PSR2805	PSR3205	PSR3805
#6	PSR2806	PSR3206	PSR3806
Assorted	PSR28A	PSR32A	PSR38A1

(4pcs/box)



MC-SHAPER

SINGLE SIZE	TAPER	SIZE	PN
#1	02	#20	F13 2302 020
#2	02	#25	F13 2302 025
#3	02	#30	F13 2302 030
ASSORTED			PN
#1 + #2 + #3			F13 1302 000

(3pcs/box)



MC-OPENER

SINGLE SIZE	TAPER	SIZE	PN
#1	04	#10	F23 2304 010
#2	04	#15	F23 2304 015
#3	04	#20	F23 2304 020
ASSORTED			PN
#1 + #2 + #3			F23 1304 000

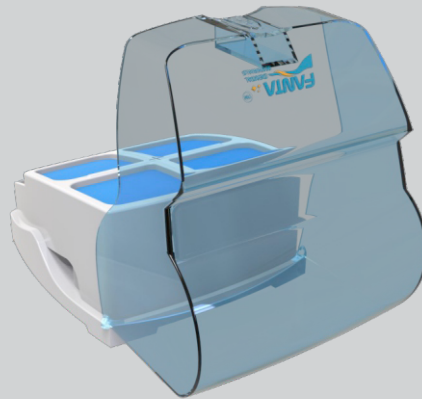
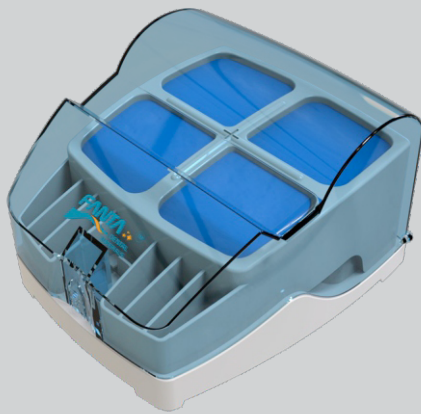
(3pcs/box)



GP PLUGGER

SINGLE SIZE	NITI	STAINLESS STEEL	PN
#1	35/03	70/02	GPP0124
#2	40/03	80/02	GPP0224
#3	50/03	100/02	GPP0324
#4	60/03	120/02	GPP0424
ASSORTED			PN
#1 + #2 + #3 + #4			GPP0014

(4pcs/box)

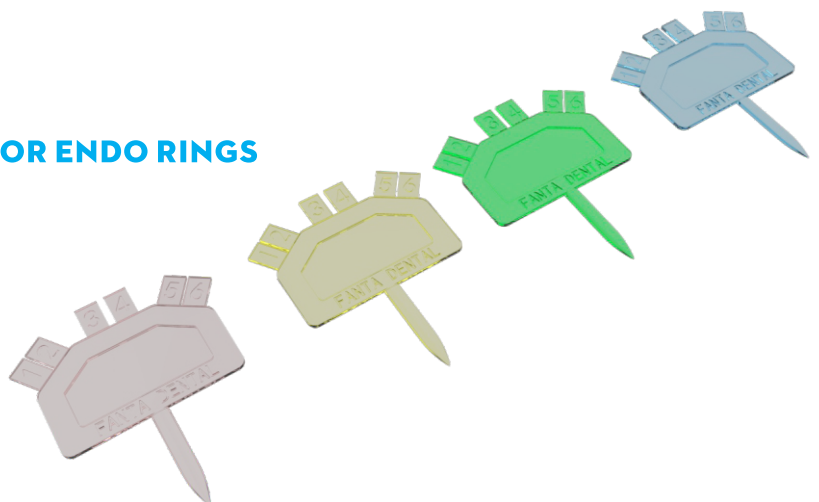


FILE ORGANIZER

- AUTOCLAVABLE AND DURABLE
- SPECIAL FOAM INSERT
- 4 BULK STORAGE COMPARTMENTS

MARKING TABS

- 4 COLORS FOR CHOICE
- AUTOCLAVABLE
- 6 NUMBERED TABS
- EASY INSERT TO FILE ORGANIZER OR ENDO RINGS



DREAM-001 ENDO MOTOR

- **BRUSHLESS MOTOR**
- **CONTINUOUS ROTATION (120-1000 RPM)**
- **RECIPROCATING MOVEMENT (30°-370°)**
- **INTEGRATED APEX LOCATOR**
 - Auto Start & stop
 - Apical Reverse
 - Apical Slow Down
- **10 PROGRAMS FOR SET**
 - CW
 - CCW
 - Reciprocating
 - ATC
- **1200 MAH LI-BATTERY**



GUTTA PERCHA

SINGLE SIZE	TAPER	PN	
#15	02	GP20215	○
#20	02	GP20220	●
#25	02	GP20225	●
#30	02	GP20230	●
#35	02	GP20235	●
#40	02	GP20240	●
#15 - #40	02	GP10201	
#45	02	GP20245	○
#50	02	GP20250	●
#55	02	GP20255	●
#60	02	GP20260	●
#70	02	GP20270	●
#80	02	GP20280	●
#45 - #80	02	GP10202	
#15	04	GP20415	○
#20	04	GP20420	●
#25	04	GP20425	●
#30	04	GP20430	●
#35	04	GP20435	●
#40	04	GP20440	●
#15 - #40	04	GP10401	
#45	04	GP20445	○
#50	04	GP20450	●
#55	04	GP20455	●
#60	04	GP20460	●
#70	04	GP20470	●
#80	04	GP20480	●
#45 - #80	04	GP10402	
#15	06	GP20615	○
#20	06	GP20620	●
#25	06	GP20625	●
#30	06	GP20630	●
#35	06	GP20635	●
#40	06	GP20640	●
#15 - #40	06	GP10601	
#45	06	GP20645	○
#50	06	GP20650	●
#55	06	GP20655	●
#60	06	GP20660	●
#70	06	GP20670	●
#80	06	GP20680	●
#45 - #80	06	GP10602	



(02 Taper 120pcs/box, 04 or 06 Taper 60pcs/box)

PAPER POINT

SINGLE SIZE	TAPER	PN	
#15	02	PP20215	○
#20	02	PP20220	●
#25	02	PP20225	●
#30	02	PP20230	●
#35	02	PP20235	●
#40	02	PP20240	●
#15 - #40	02	PP10201	
#45	02	PP20245	○
#50	02	PP20250	●
#55	02	PP20255	●
#60	02	PP20260	●
#70	02	PP20270	●
#80	02	PP20280	●
#45 - #80	02	PP10202	
#15	04	PP20415	○
#20	04	PP20420	●
#25	04	PP20425	●
#30	04	PP20430	●
#35	04	PP20435	●
#40	04	PP20440	●
#15 - #40	04	PP10401	
#45	04	PP20445	○
#50	04	PP20450	●
#55	04	PP20455	●
#60	04	PP20460	●
#70	04	PP20470	●
#80	04	PP20480	●
#45 - #80	04	PP10402	
#15	06	PP20615	○
#20	06	PP20620	●
#25	06	PP20625	●
#30	06	PP20630	●
#35	06	PP20635	●
#40	06	PP20640	●
#15 - #40	06	PP10601	
#45	06	PP20645	○
#50	06	PP20650	●
#55	06	PP20655	●
#60	06	PP20660	●
#70	06	PP20670	●
#80	06	PP20680	●
#45 - #80	06	PP10602	



(02 Taper 120pcs/box, 04 or 06 Taper 60pcs/box)

