



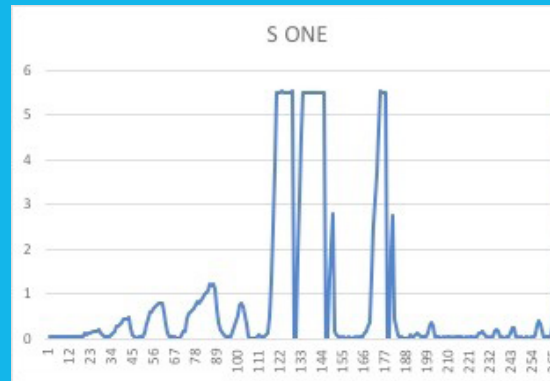
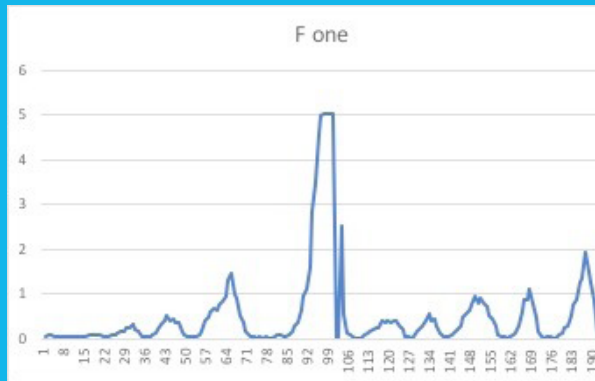
AF™ F One

New generation of ONE FILE system



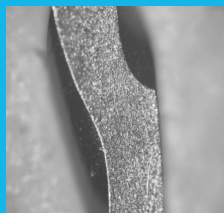
A Closer Look at AF™ F One

- **Unique Cross Section Design**
- **Flat Cut Processed**
- **Continuous Rotation (recommend 500RPM, 2.6N)**
- **AF™-R Wire Tech**

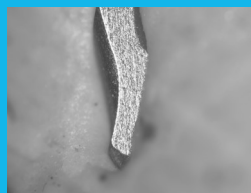


Stress that instruments meet in the canal for F One and S One.

F One has a **11mm** length handle, which enable a better access to molars.



Flat side



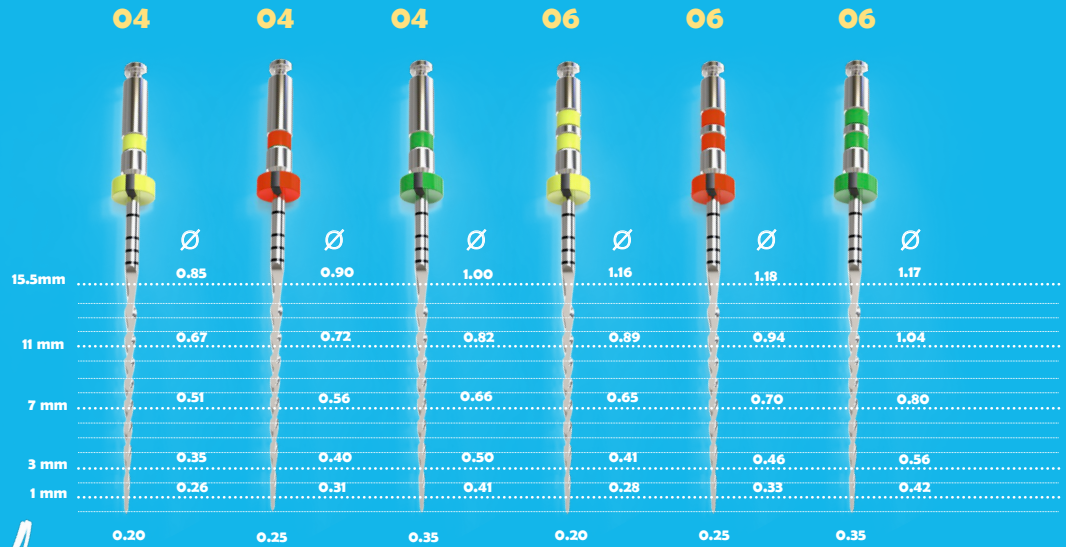
Tip Area



Patent flat design:

- The vertical blades can sweeps the debris from flutes to the relieved area, which results better cutting of flutes and less stress.
- Reduce the instrument's cutting surface, less stress will be placed on the instrument.
- More room for irrigate during operation which may lowering the rate of smear layer formation.
- The flat is not cut deeply, so it increases the flexibility without compromising the strength.

If you would like other size or taper, please contact the FANTA dealer in your city.



Guidelines for use:

- AF™ F One files are compatible with all major rotary motors in the market
- Use open file to create a straight-line access, Speed 350RPM, Torque 2.6N
- Explore the canal by using #10 and #15 stainless steel K file
- Use F One to prepare to 2/3 of the working length, Speed 500RPM, Torque 2.6N
- Re-determine WL again by #10 file
- Use F One again to the full working length

Every time you change file, please ensure irrigate the root canal copiously and frequently. (very important)

F One Product Range:



Marking Tab



File Organizer



Optional package

For F One



Dream-001 Motor



AF MAX-3