

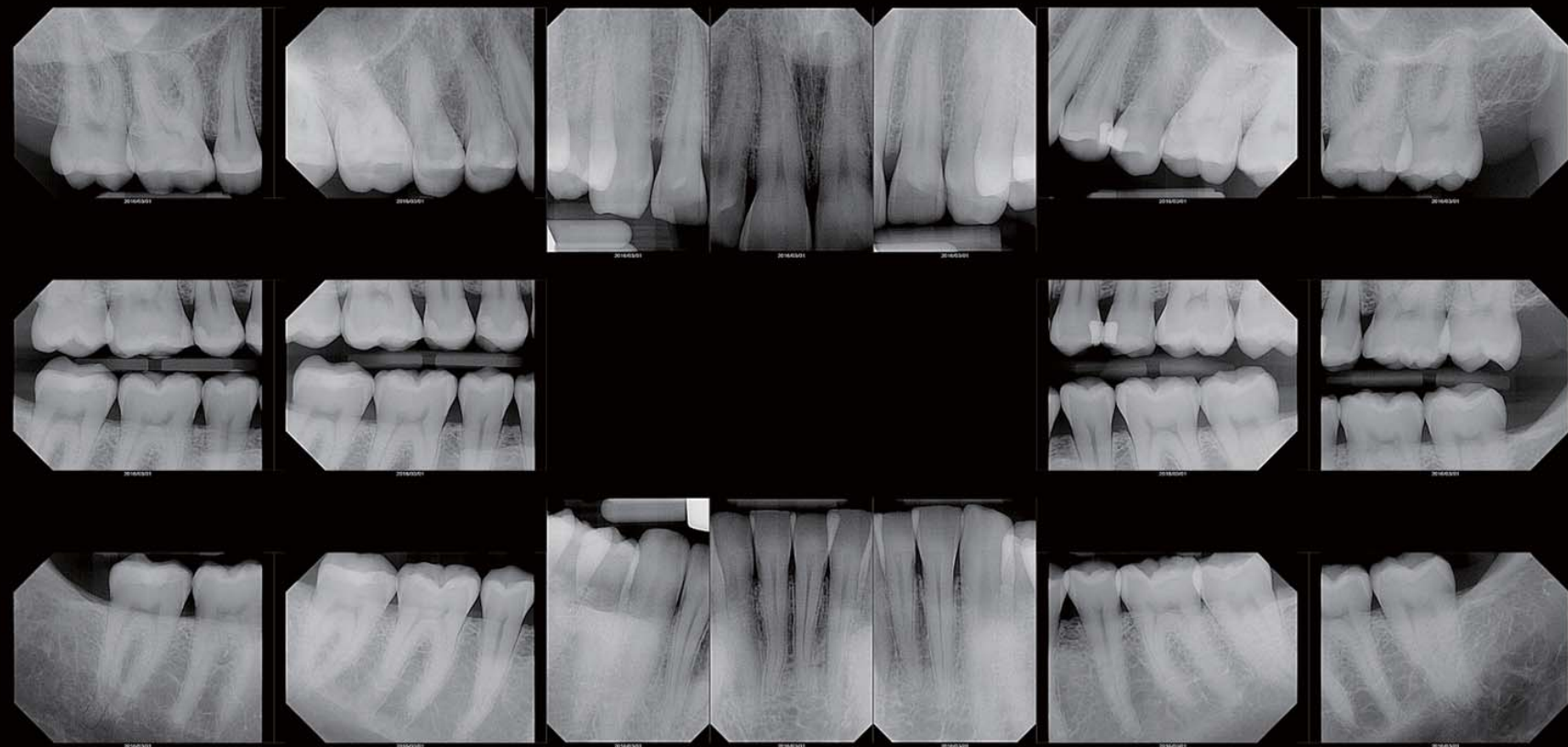


INTRAORAL IMAGING
RIOSensor

Outstanding intraoral sensor

Digitalize your intraoral examination with RIOSensor.
Streamline workflow with high-resolution digital images.

 High-resolution images



Captured by XrayVision 4 - Apteryx Inc

 Ergonomic design

 Plug and Use

 Durability

 Size 1 & 2



Specifications are subject to change without prior notice.

RIS500 Specifications

Outside dimensions
Imaging area
Pixel size
Sensor Technology
Scintillator
Number of pixels
Image resolution
Connection
Cable length

Size 1

39x25mm
30x20mm
20x20µm
Advanced CMOS with Optical fiber
Csl.
1.5 Megapixels
25 lp/mm
USB 2.0 high speed
2 meters

Size 2

42x30mm
34x26mm
20x20µm
Advanced CMOS with Optical fiber
Csl.
2.2 Megapixels
25 lp/mm
USB 2.0 high speed
2 meters



For more information or inquiries,
please visit www.raymedical.com
or contact your local representative



Ray Co., Ltd. 🏢

332-7, Samsung1-ro, Hwaseong-si, Gyeonggi-do, 18380, Korea

Phone +82.31.605.1000

Email ray_overseas@raymedical.co.kr

Web www.raymedical.com



RBS-S02 (rev.0)

Design and specifications
are subject to change
without notice